



HIGH CHROME PRODUCT GUIDE



Foothills Steel Foundry have been manufacturing world class wear parts for over **70 years**. We have an exemplary reputation for high quality steel castings, professional service and product support, and **some of the best wear life in the industry**.

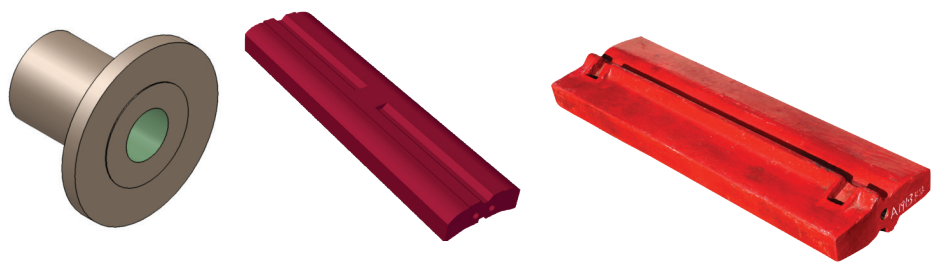
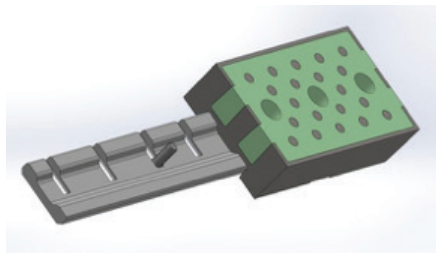
As a **proud family owned and operated** business spanning 4 generations, Foothills Steel Foundry (FSF) is renowned for our highly developed line of alloys and casting solutions for the mining, quarrying and petro chemical industries.

Delivering solutions since our humble beginnings in 1947, our goal is continual product improvement and development through collaborative relationships across the globe.

HIGH CHROME CASTINGS

We specialize in manufacturing high-quality High Chrome Castings for use in mining operations

- › Centrifugally cast pipe spool inserts up to 850 BHN
- › Cast HCWI inserts
- › Leading edge Ultrasonic wear monitoring
- › Cyclone components
- › Proprietary Bi-metallic castings
- › Horizontal Shaft Impactors
- › Vertical Shaft Impactors
- › Mixer Arms
- › Chute Liners
- › Mill Liners
- › Custom Castings



PROPRIETARY HIGH CHROME CASTINGS

- ✓ 24-29% Chromium addition
- ✓ 2.5-3.5% Carbon
- ✓ Custom anneal (stress relief)
- ✓ Custom Tempering cycle
- ✓ BHN range as high as 850BHN while still exhibiting good impact resistance
- ✓ Machineable without inserts, including the ability to thread castings



HIGH CHROME WHITE IRON ROTOR ASSEMBLY

Reverse engineered to meet or exceed OEM specifications in float cell applications

OEM design of a steel rotor used in a float cell, coated in neoprene. Average life approx. 6 months.



PLANNING YOUR NEXT PITSTOP OR TURNAROUND?

With over 40 acres of buildings and storage, we have the capacity to arrange in Just in Time deliveries based around your planned maintenance schedules

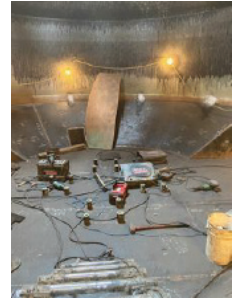
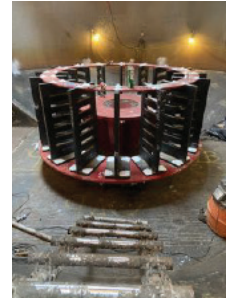
HIGH CHROME PROJECTS

Float Cell assembly converted to high chrome, replacing all neoprene.

Expected life of 2-4 years, currently passing the 6 month mark.

Internal rotor was machined, threaded, and dynamically balanced without the use of mild steel inserts.

Walls and floors outfitted with Chrome Carbide Overlay (CCO) plate



HIGH CHROME WHITE IRON CYCLONES

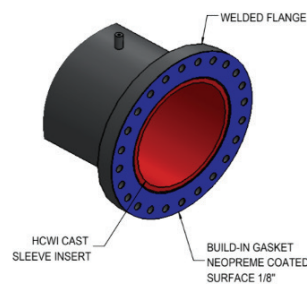
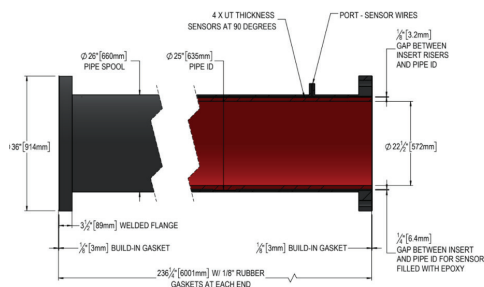
High chrome cyclone inserts, designed and machined to fit inside a steel shell allowing for fast replacement and lower per item cost.



HIGH CHROME WHITE IRON PIPE SPOOL INSERT

24" ID pipe spool, where the first 36" of neoprene was removed and replaced with an 800BHN cast HCWI insert.

Projected to outwear current vendor by approximately 20%, while supplied at a 40% discount on current pricing.



FACILITY SIZE AND LOCATION

We have a casting capacity up to 9,000kg finished weight, and a volume exceeding 500,000kg per month.

We also have machining, finishing and assembly facilities in-house, allowing us to heat treat, machine and assemble more complex cast parts, including P&H shovel gear racking, bonnets, coneheads and crusher mainframe components, and entire crushers.

- 20,000 square foot facility
- 30 Acres of land
- Easy access off Stony Trail and 114 Ave SE Calgary



**Response you can rely on
Experience you can trust**

**HEAD OFFICE:
FOOTHILLS STEEL FOUNDRY
9390 114 Avenue SE
Calgary, Alberta
T3S 0A4 Canada**

**TEL: 403-255-0125
TOLLFREE: 1-888-STEEL44
FAX: 403-252-8994
EMAIL: info@foothillssteel.ca**

**EASTERN SALES: MONTREAL
SALES MANAGER: Steve Rudinsky
TEL: 514 318 1901
TOLLFREE: 1-888-STEEL44
EMAIL: s.rudinsky@foothillssteel.ca**

foothillssteel.com